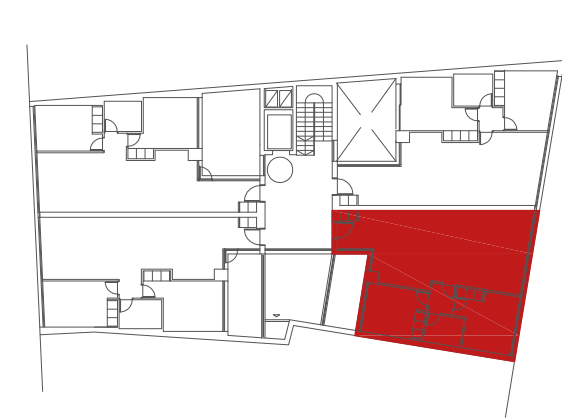
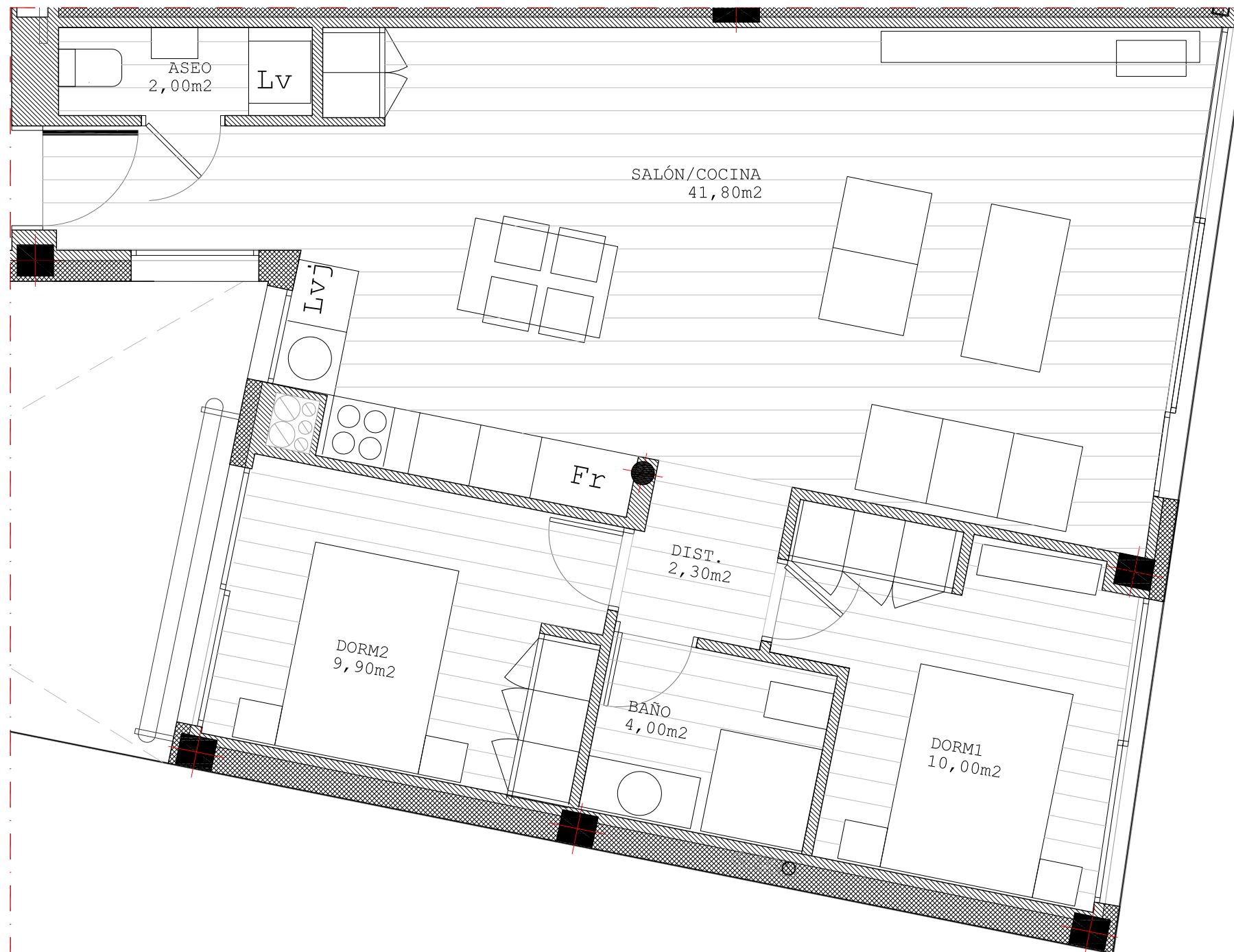




## Planta segunda Vivienda 2A



2A



## Vivienda 3dorm.

### SUP. GENERALES

|                  |                     |
|------------------|---------------------|
| Superficie útil: | 70.00m <sup>2</sup> |
| Sup. terraza:    | 0.00m <sup>2</sup>  |

### SUP. ÚTILES

|               |                     |
|---------------|---------------------|
| Salón-cocina: | 41.80m <sup>2</sup> |
| Distribuidor: | 2.30m <sup>2</sup>  |
| Dormitorio 1: | 10.00m <sup>2</sup> |
| Baño 1:       | 4.00m <sup>2</sup>  |
| Dormitorio 2: | 9.90m <sup>2</sup>  |
| Aseo:         | 2.00m <sup>2</sup>  |

Ctra. de Majadahonda 18  
Boadilla del Monte  
C.P.28660

planta  
2



91 781 86 64  
Los Acantilados, Sociedad Coop.